

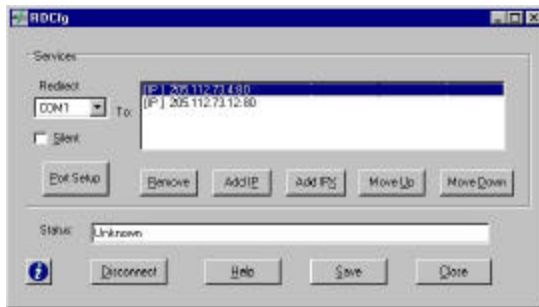


LAN-100 ETHERNET DEVICE SERVER

The Tucor™ Ethernet Device Server modem is based on state-of-the-art integrated circuits that provide Ethernet connectivity to the Tucor line of irrigation controllers. Supported with powerful Windows software, one can map up to 32 PC-based COM ports directly to IP addresses. Once COM ports are mapped, any Tucor RxS software package can communicate with the controller over the local area network or the internet. Both Tucor software and the controller operate normally as if they were still directly connected.



**LAN-100 Device Server
(Without cover)**



Comm Port Redirector

FEATURES:

- Easily network-enabled using RS-232 port or standard IP addressing.
- Flexible, well-developed IP protocol stack.
- Wall-mountable, standalone device server with external DC power supply and 6' power cord.
- Integral Ethernet RJ45 (10BASE-T) connector.
- RS-232C data interface.
- Flash ROM for future software upgrades.
- Compatible with Version 2.0/IEEE 802.3.
- Data rates to 115.2 Kbps.
- Transmit Data, Receive Data and Good Link diagnostics LEDs.
- Powerful, 32-bit Windows-based Redirector Software that allows COM port #5 through COM port #40 connections. Redirect software transparent to all applications.
- Supports Microsoft HyperTerminal communications for "wrap-around" testing.

ORDERING CONFIGURATIONS:

LAN-100 Ethernet Device Server with Redirector software and power supply